

# PhillipCapital India

Your Partner in Finance

## Corporate Profile

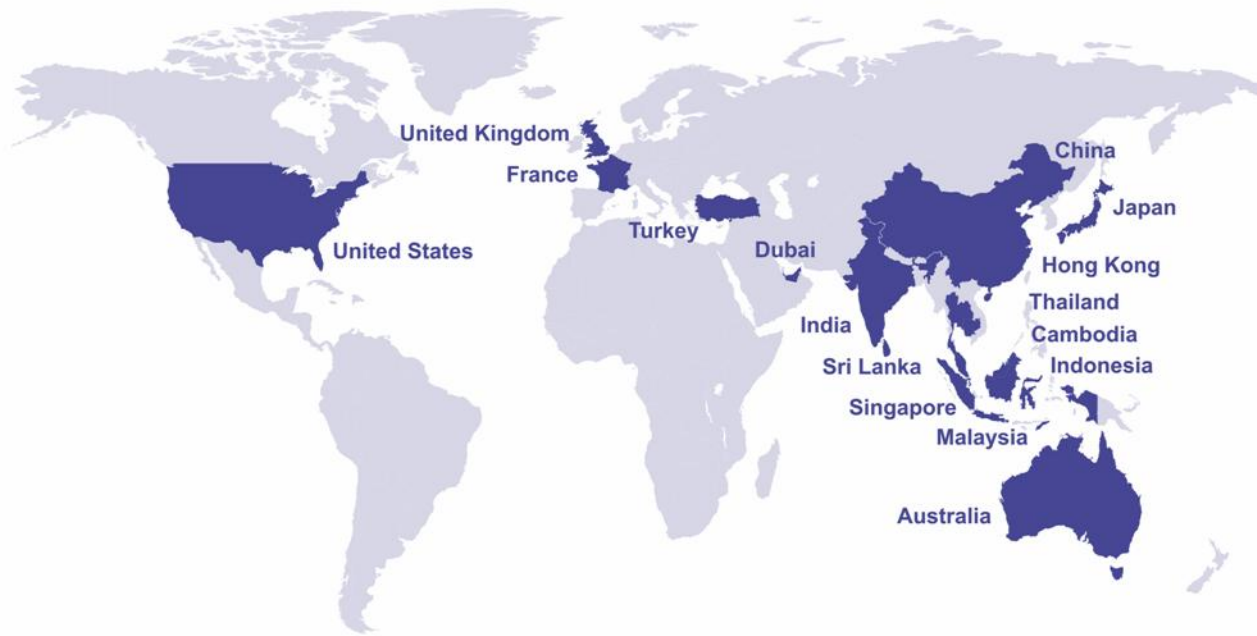
Disclaimer - Risk of loss in trading/investment can be substantial and even more than the amount / margin given by you. You should carefully consider whether trading/investment is appropriate for you in light of your experience, objectives, financial resources and other relevant circumstances. PhillipCapital and any of its employees, directors, associates, group entities, affiliates shall not be liable for losses, if any, incurred by you. You are further cautioned that trading/investments in financial markets are subject to market risks and are advised to seek trading/investment advice before investing. There is no guarantee/assurance as to returns or profits or capital protection or appreciation. PhillipCapital (India) Pvt. Ltd. and any of its employees, directors, associates, group entities, affiliates is not inducing you for trading/investing in the financial market(s). Trading/Investment decision is your sole responsibility. For Detailed Disclaimer: Please visit our website [www.phillipcapital.in](http://www.phillipcapital.in)

# About PhillipCapital Group

We are an **integrated financial house** with a **global presence** using **information technology** and **distribution** as our core competencies in the provision of financial services.



# Global Presence



PhillipCapital operates in  
the financial hub of  
**16 countries.**

- Established in **1975**
- Started operation as a financial services company, Phillip Securities, at the time of inception, PhillipCapital has an integrated financial house with a global presence that offers a full range of quality and innovative services to retail and high net worth individuals, family offices, corporate and institutional customers.
- Assets Under Management worldwide more than **USD 28 Billion**
- Shareholder's funds in excess of **USD 1 Billion**
- Over **1 Million clients** worldwide

# Products & Services

	Stockbroking		Futures, Derivatives, Commodities		Wealth Management Unit Trust, Insurance
	Private Equity		Corporate Finance		Research
	Debt Capital Market		Contracts for Difference, Exchange Traded Funds		Investor Relations
	Fund Management		Portfolio Management Services		Institutional Client Group

# You can Trade the World Markets with us



- **America**

- ✓ US (NASDAQ, NYSE, AMEX)
- ✓ Canada (TSX)

- **Europe**

- ✓ UK (LSE)
- ✓ France, Netherlands, Portugal, Belgium (Euronext Paris / Amsterdam / Lisbon / Brussels)
- ✓ Germany (Frankfurt Exchange)
- ✓ Turkey (Borsa Istanbul)

- **Asia Pacific**

- |                   |                  |                |
|-------------------|------------------|----------------|
| ✓ Singapore (SGX) | China(SSE,SZSE)  | Japan(TSE)     |
| ✓ Malaysia(Bursa) | Korea(KSE)       | Thailand(SET)  |
| ✓ Taiwan(TWSE)    | Philippines(PSE) | Sri Lanka(CSE) |
| ✓ Hong Kong(HKEx) | Indonesia(IDX)   | Australia(ASX) |
| ✓ Dubai (DGCX)    |                  |                |

## ➤ **POEMS Internet**

POEMS internet allows you to monitor the pulse of leading stock exchanges and trade with ease as you can place your stocks orders from home or office if you have internet connection.



## ➤ **TeleBroker**

Phillip's Telebroker is a 24-Hour, automated shares trading service using any handphone or touch-tone phone. It allows you to trade in SGX and KLSE stocks, with real-time stock quotes and account information.

## ➤ POEMS Mobile

POEMS Mobile unleashes the power to trade anywhere you are at anytime you like. You can now capitalise on global market opportunities, stay on top of your trades with easy access to your positions and the market conditions with streaming prices, real time trading limits and order status.

## POEMS for Smartphones



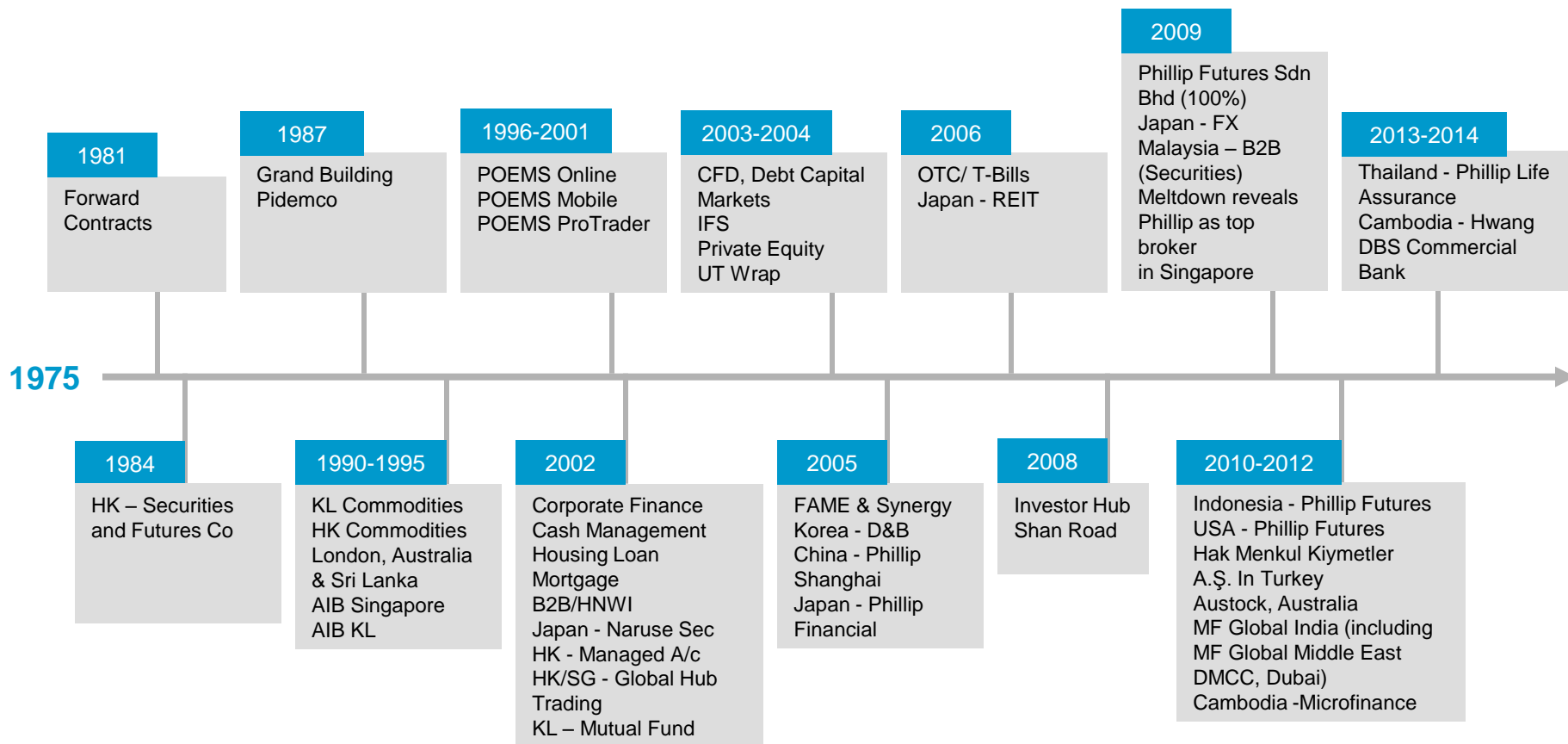
## ➤ POEMS ProTrader

ProTrader equips you with the ability to place advanced order types such as Stop Limit, Contingent and Iceberg, in addition to the normal limit order that is available for trade

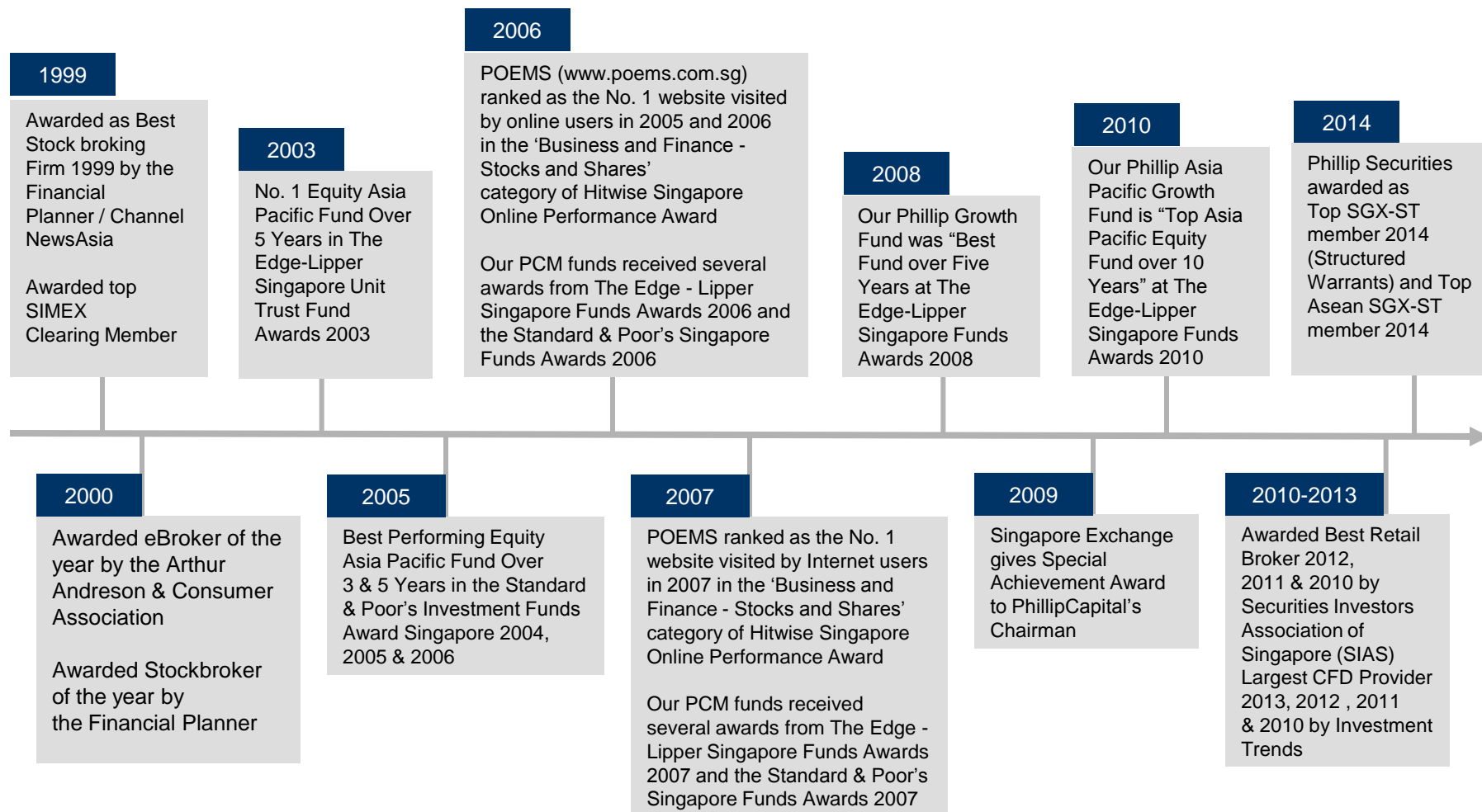




# Major Milestones



# Awards



- **PhillipCapital India** is a part of the **PhillipCapital Group of Singapore**.
- The securities broking arm in India has been a dominant part of the Indian securities market place in the past decade. The team has experience across market / product segments and with the lineage of PhillipCapital Group, aims to provide efficient solutions to the Indian marketplace for all trading requirements.
- The commodities broking arm in India is one of the pioneering service providers for access to local commodity futures.
- We have worked extensively with institutional clients as well as HNIs and retail clients across asset classes.

## **Client-Driven**

PhillipCapital experienced professionals are focused on providing the best execution and clearing services to help clients achieve their trading or hedging objectives.

## **Market Experience**

Through a global network built over years of hard-won success and a commanding presence on the world's major exchanges, PhillipCapital India opens doors to an expansive range of products and services.

## **Objective Insight**

With a focus on objective, thought-leading research, PhillipCapital India offers clients practical and timely insight to capitalize on market opportunity.

## **Trusted Relationship**

By cultivating a deep understanding of client needs, our professionals provide a trusted perspective and customized execution and clearing services through the life of our relationship.

- Strong local presence and knowledge of key financial markets
- Provide up to date market updates, trading ideas and trade execution
- Offer customized solutions and direct market access to major stock exchanges
- Proven track record in client servicing

# India - Local Business Structure

## PhillipCapital India Group

### Equity

- I) Institutional Clients: FII/DII
- II) Private Clientele - HNI, SMEs etc.

### Commodity

- I) Institutional Clients: Corporates, Commercial Hedgers, Arbitrageurs
- II) Retail Clientele - HNI, SMEs etc

### Currency

### Fixed Income

- I) Clientele: Corporate Treasuries, Banks, HNIs
- II) Access to Primary and Secondary Market

### Distribution

- I) Mutual Funds
- II) IPO
- III) Fixed Deposit

### Institutional Research Offering

### Portfolio Management Services

### NBFC: Margin Funding

### Access to Global Markets and Products / Asset Classes

# India - Market Outreach



**BSE**  
EXPERIENCE THE NEW

**NSE**  
National Stock Exchange of India Limited

**MCX**  
METAL & ENERGY  
Trade with Trust

**NCDEX**  
National Commodity & Derivatives Exchange Ltd.

**MCX<sup>2</sup>SX**  
India's New Stock Exchange

- Portfolio Management Services
- Margin Funding
- Depository – NSDL / CDSL
- Distribution products – Mutual Funds / IPO / FD / Bonds etc.
- Corporate Bonds
- Loan against shares
- Online Trading Applications
- Securities Lending and Borrowing
- Multi Asset Class Research
- Algo Trading



# India - Our Research Inputs

- Large Cap / Mid Cap Fundamental Research – Sector /Company
- Daily Technical Analysis –
  - P-ACT – PhillipCapital Actionable Trades
- Daily Derivatives Analysis –
  - Path – PhillipCapital Analysis and Trading Highlights
  - PCODE – PhillipCapital on Derivatives
  - POINT – PhillipCapital Open Interest
  - PSDR – PhillipCapital Stock Delivery Report
  - FTP – Future Turning Point
- Daily Currency Futures Report
- Daily Commodity Reports
- Intraday and positional trading calls based on technical analysis.

# Trading Platforms – Local/Global Markets

## *Trading Platform : Local Markets*

Product	Platform
Equities	ODIN, Omnesys, DION, FOW, FlexTrade, Greeksoft, NOW, Presto
Commodity Futures	ODIN, Omnesys, DION
Currency Futures	ODIN, Omnesys, DION, NOW



## *Trading Platform : Global Markets*

Product	Platform
Equities	POEMS, RTS Realtime Systems, POEMS Professional
Commodity Futures	POEMS, RTS Realtime Systems, POEMS Professional, Phillip TT
Currency Futures	POEMS, RTS Realtime Systems, POEMS Professional, Phillip TT
Spot Forex and Bullion	POEMS, M Trader, Phillip FXTrader, Phillip fx365



# Talk to us. **Talk to Phillip.**

## **PhillipCapital (India) Pvt. Ltd**

No.1, 18<sup>th</sup> Floor, Urmi Estate,  
95 Ganpatrao Kadam Marg,  
Lower Parel West,  
Mumbai 400 013

Tel No: + 91 22 24831919

Toll Free : 1800-221-331

Email: [contact@phillipcapital.in](mailto:contact@phillipcapital.in)

